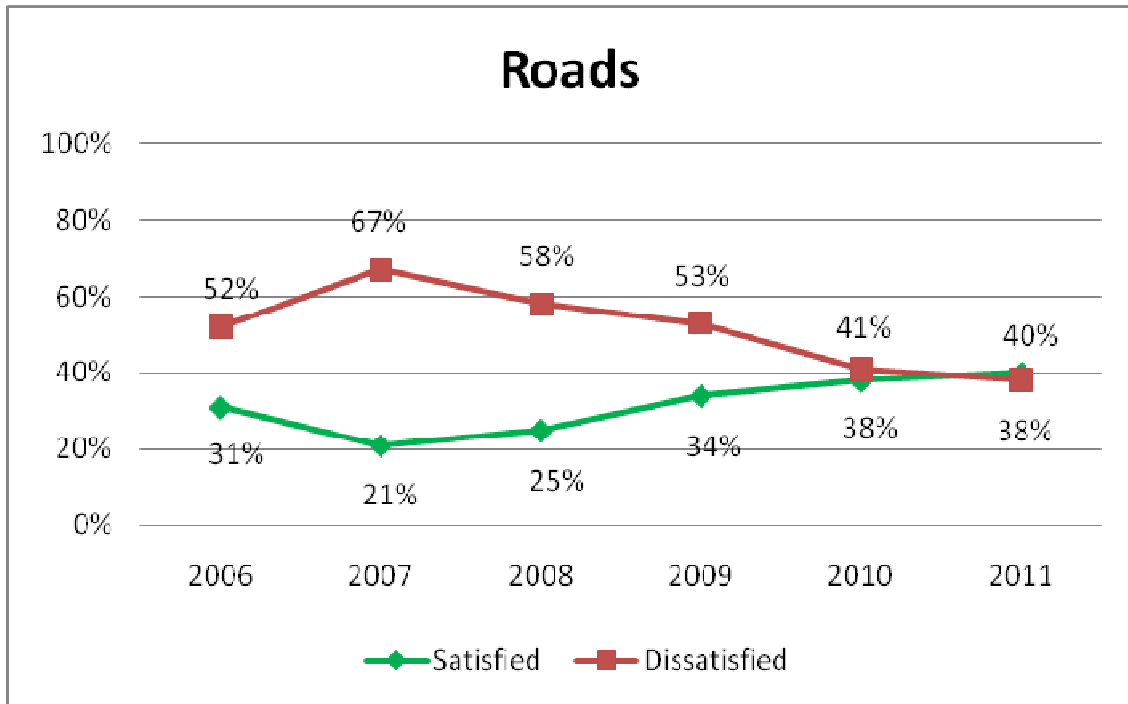
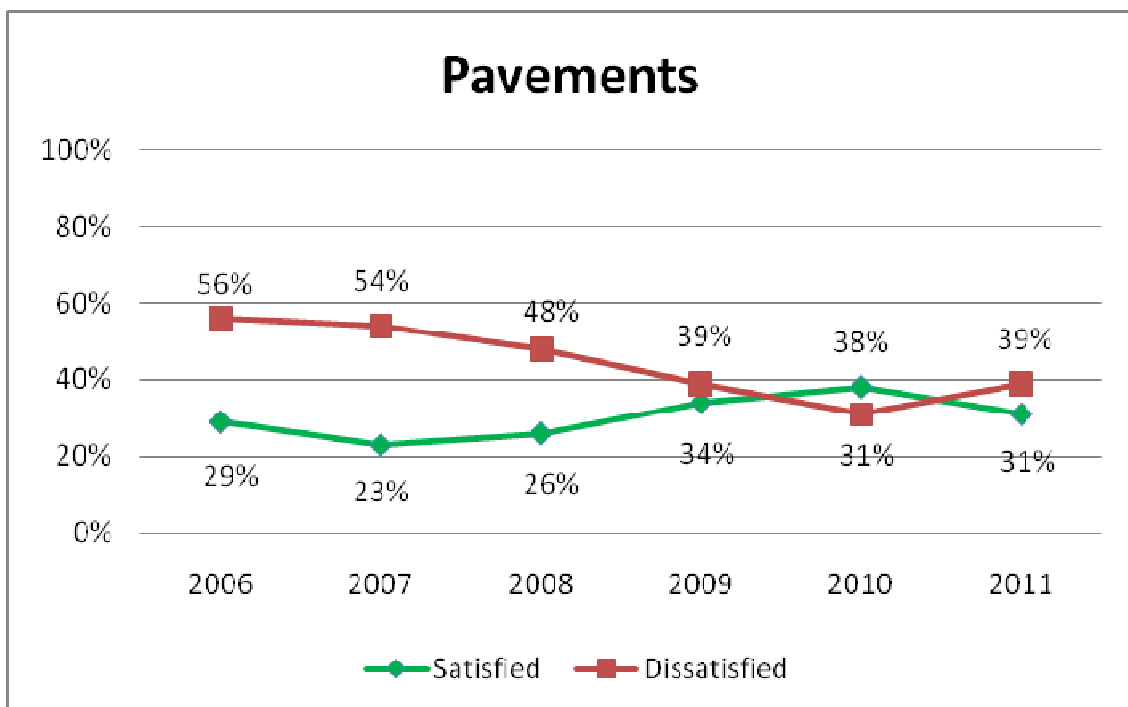


Results from the Highway Tracker Survey 2011

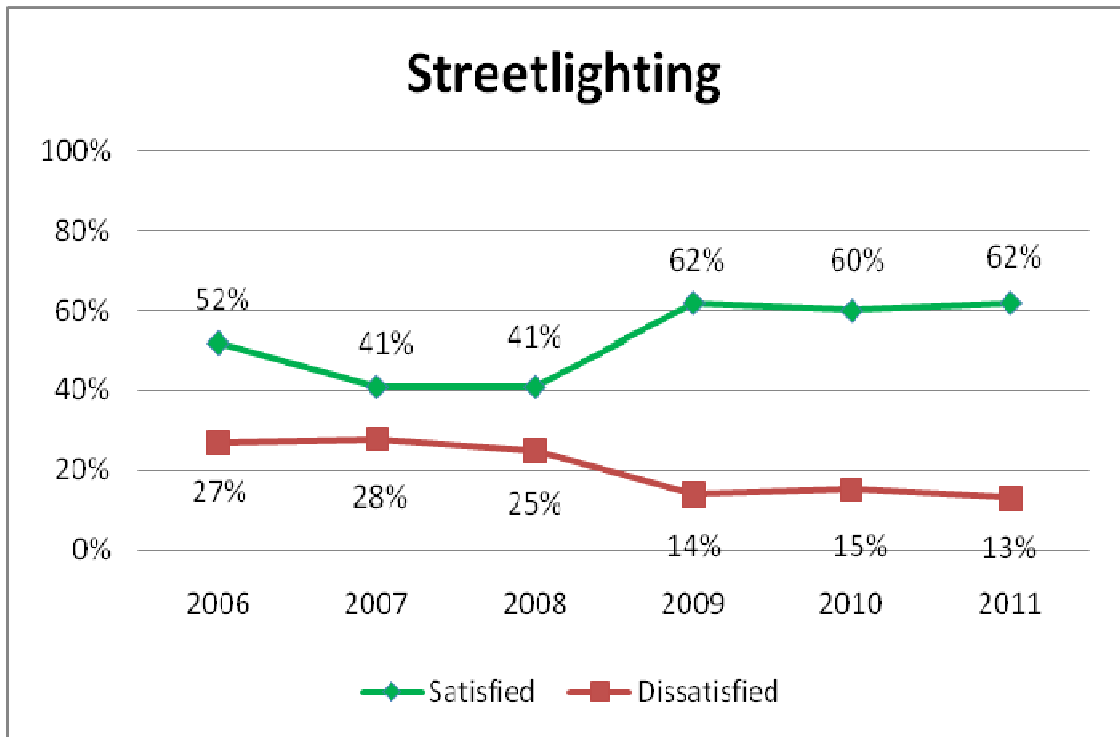
**Figure 1 – Combined Results - Satisfaction with the condition of roads in the local area – year-on-year comparison (average of residents, County Members & Parish/Town Councils)**



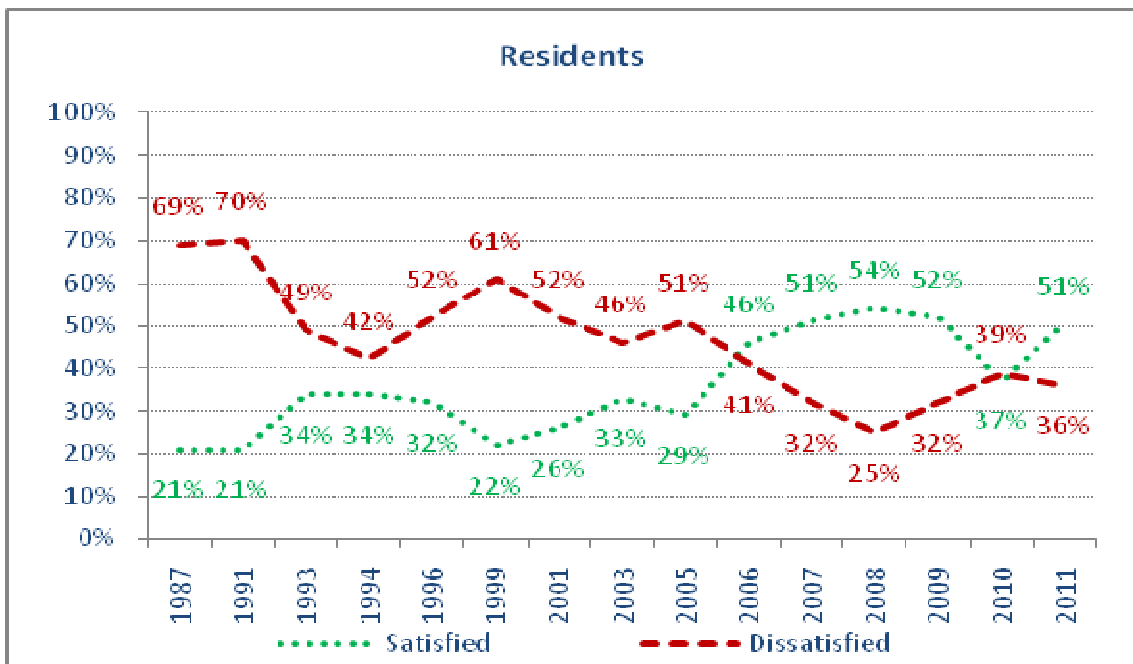
**Figure 2 - Combined Results - Satisfaction with the condition of pavements in the local area – year-on-year comparison (average of residents, County Members & Parish/Town Councils)**



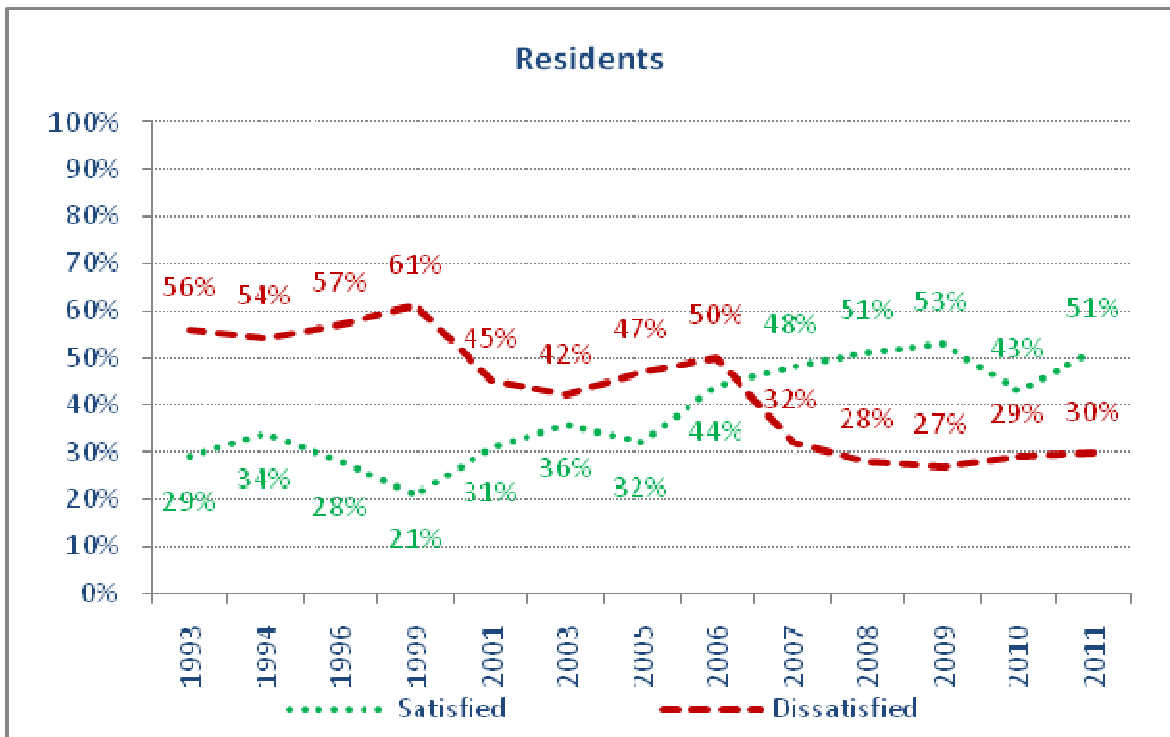
**Figure 3 - Combined Results - overall satisfaction with the condition of street lighting in the local area – year-on-year comparison (average of residents, County Members & Parish/Town Councils)**



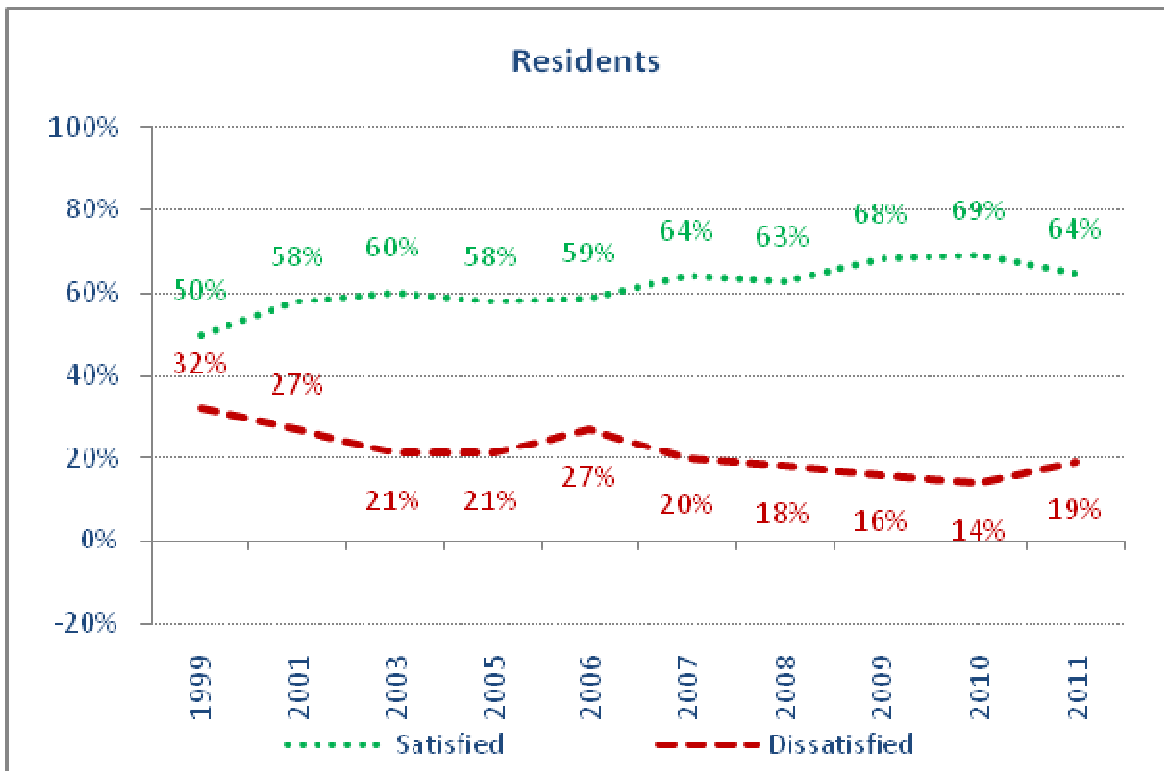
**Figure 4 -Residents - Satisfaction with the condition of roads in the local area – year-on-year comparison**



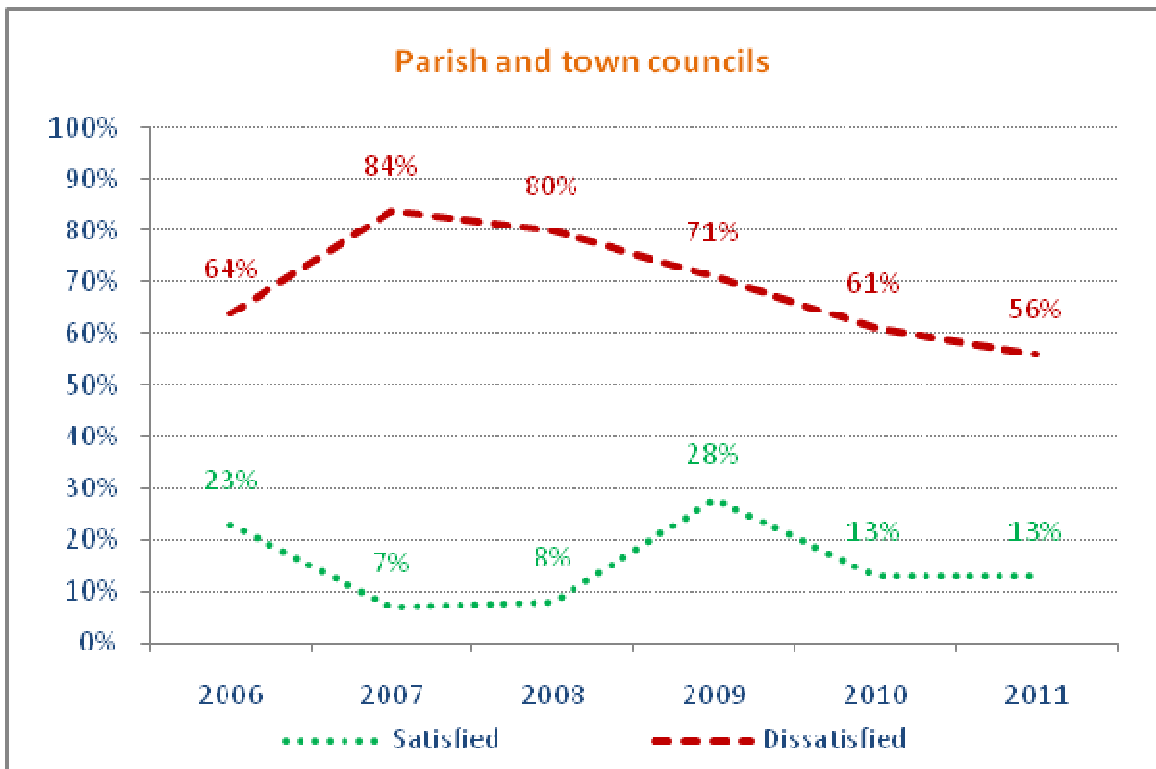
**Figure 5 - Residents - Satisfaction with the condition of pavements in the local area – year-on-year comparison**



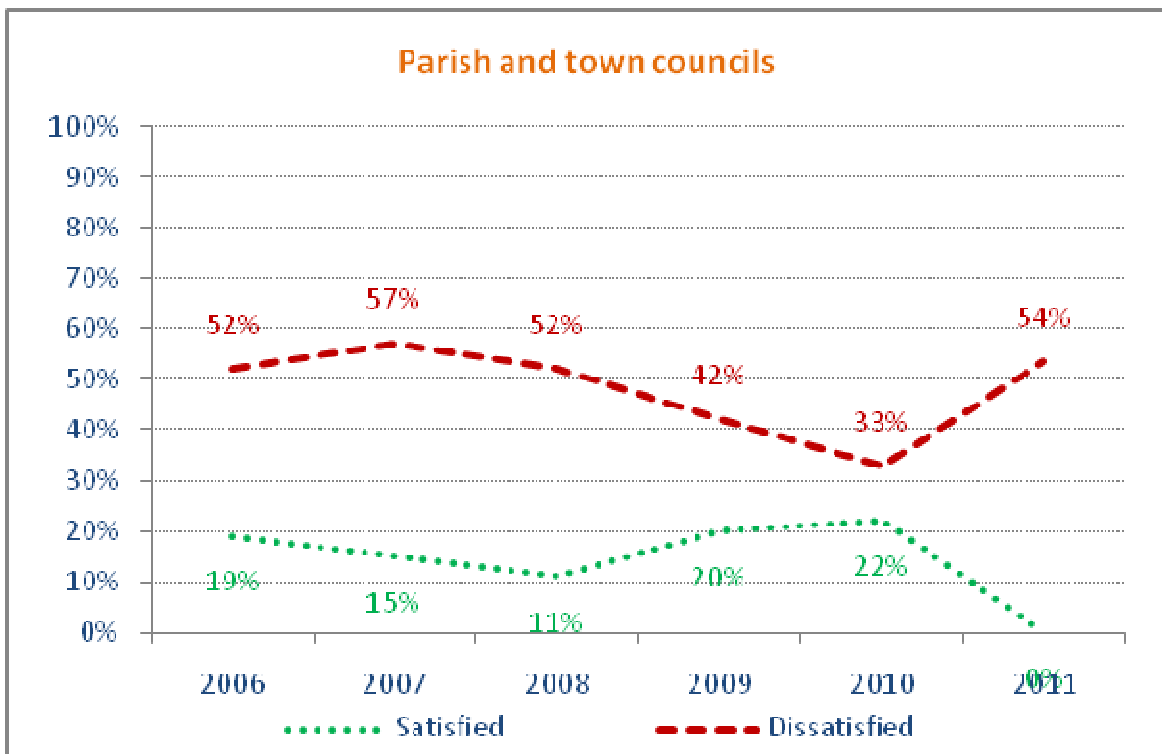
**Figure 6 - Residents - overall satisfaction with the condition of street lighting in the local area – year-on-year comparison**



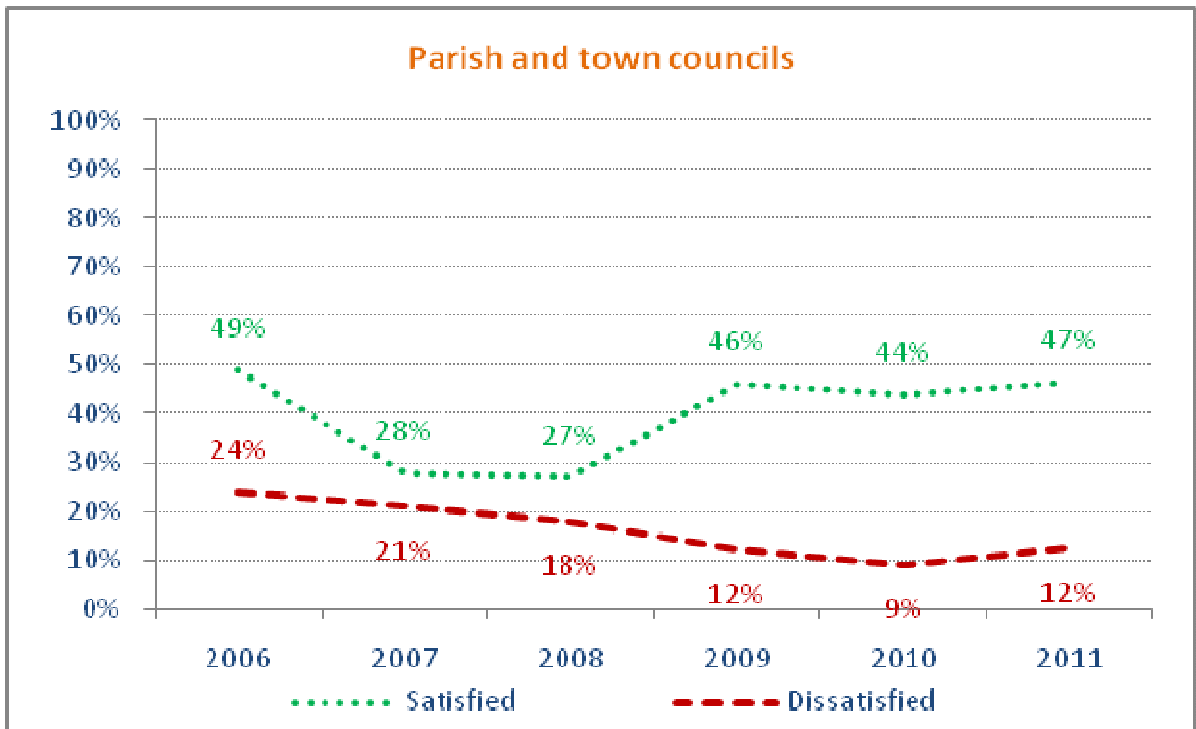
**Figure 7 –Parish/Town Councils - Satisfaction with the condition of roads in the local area – year-on-year comparison**



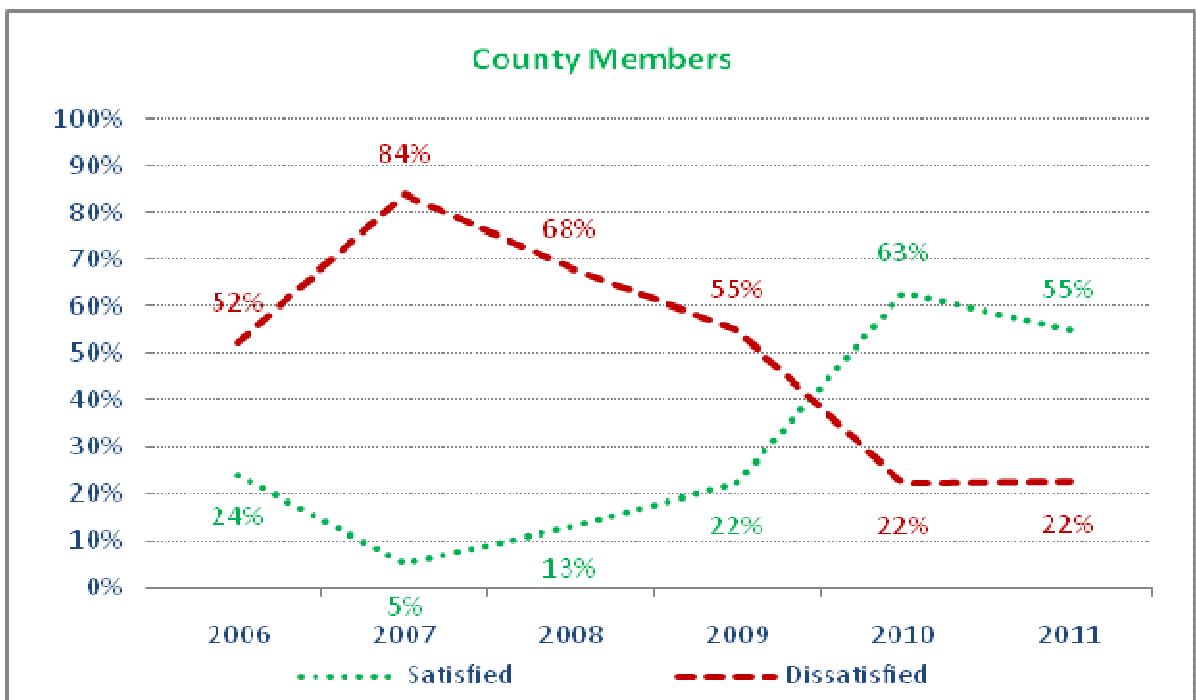
**Figure 8 - Parish/Town Councils - Satisfaction with the condition of pavements in the local area – year-on-year comparison**



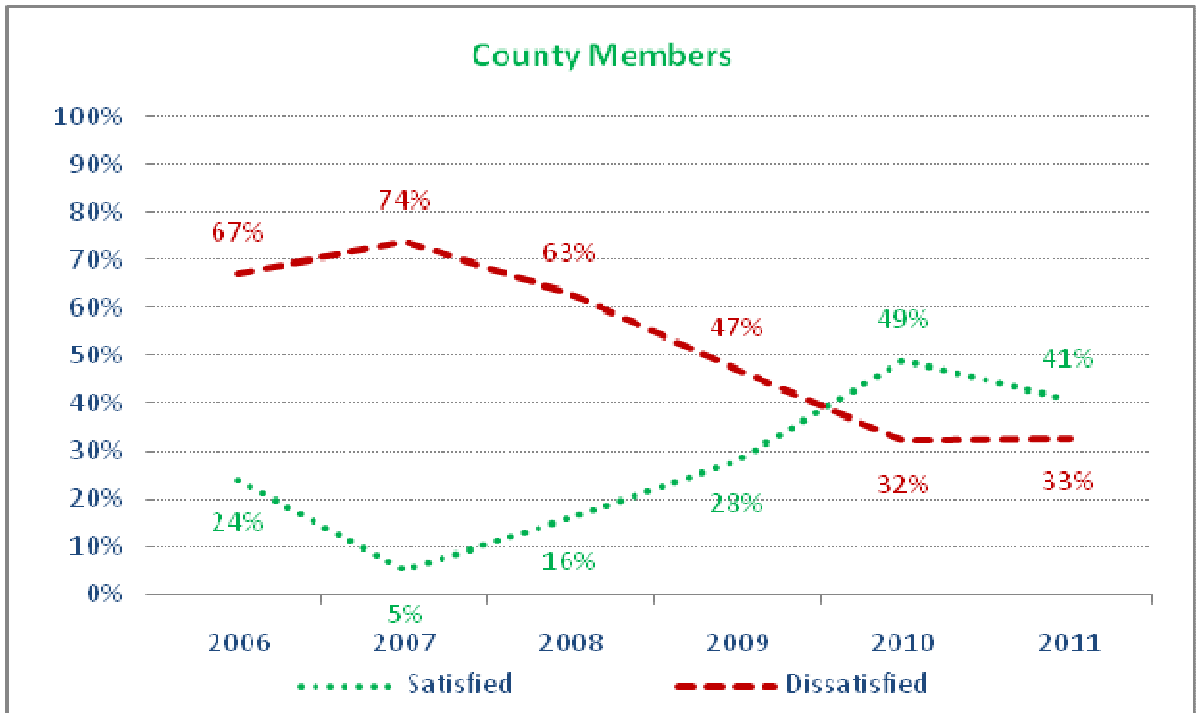
**Figure 9 - Parish/Town Councils - overall satisfaction with the condition of street lighting in the local area – year-on-year comparison**



**Figure 10 –County Members - Satisfaction with the condition of roads in the local area – year-on-year comparison**



**Figure 11 - County Members - Satisfaction with the condition of pavements in the local area – year-on-year comparison**



**Figure 12 - County Members - overall satisfaction with the condition of street lighting in the local area – year-on-year comparison**

